

**MANITOBA METIS FEDERATION – MATRIX
SOLUTIONS INC. PARTNERSHIP**

INDIGENOUS CONSTRUCTION MONITORING

WEEKLY REPORT

SPREAD 7

OCTOBER 1ST TO OCTOBER 6TH

1. PURPOSE OF THIS REPORT

The report is a weekly summary of the daily reports submitted by the Indigenous Construction Monitors that are working on spread seven. The social and cultural findings have been tabulated with locations and mitigation measures below. A summary of the construction activities has been summarized for the weeks of October 1st to October 6th, 2018.

Social and Cultural Features

Field Observation	# of occurrences	Description and Mitigation Measures	Mitigation Status	Further Action Required (Yes/No)
Traditional Use Area (hunting, fishing, gathering, trapping)	N/A			
Rock Formations (rocks of significance, tipi rings, etc.)	N/A			
Artifacts	N/A			
Bones	N/A			
Potential Gravesites	N/A			

Environmental Features

Field Observation	# of occurrences	Description and Mitigation Measures	Mitigation Status	Further Action Required (Yes/No)
Medicinal or Cultural Plants	N/A			
Aquatic Life	N/A			
Animal Observations or Burrows	N/A			
Bird Nests	N/A			
Trees (Red Willow)	N/A			
Wetlands	N/A			
Watercourse Crossing	N/A			

Additional Observations and Summary of Activities or Concerns

On October 1, safety theme identified as trips, slips, falls, weather, congested sites; contact info for Medic-camp (1-780-329-9183); Temp +7, clean and disinfect vehicles and boots, follow all BIO Security; Traditional Land Use: 1 Archaeologists is area work ongoing HER-160; SF23 (KP 830+600) Monitor Banister welding crew, they are finished welding at SF23 waiting to cross highway 254 to get to SF24 and waiting to start welding. All sites are nice and clean after they move on to the next site; SF37 (KP861+695) Monitor Banister stripping the topsoil. Banister was using a spotter while the dozers were moving the topsoil into a pile so they don't cross the stake boundaries; SF38(KP863+392) Re-assess heritage sensitive area HER-160; Archaeologist is waiting for the equipment to arrive on site; Work forecast: Go back tomorrow and monitor the lower end crew.

On October 2, safety theme identified as trips, slips, falls, weather, congested sites; contact info for Medic-camp (1-780-329-9183); Temp +7, UV index 2 or lower, cloudy with 60 percent chance of showers, follow all Bio Security; SF4 (KP 813+200) Monitor Banister lower end crew. They were pumping the water out of the trench before they could install the pipe. They were also preheating the pipe so they could jeep the pipe to find any holiday defects if any repairs are needed. The jeep will indicated if any damage are done to the pipe before they install the pipe in the trench. The jeep is like a big coil spring that they put around the pipe and one guy walks along the pipe if the jeep goes of that indicates they have a holiday (DAMAGE) on the pipe; SF6(KP816+800)Monitor Banister installing a pipe that had a 90 degree angle. The pipe was going to be attached to the bore pipe, which comes under the roadway; SF11(KP819+000) Monitor Banister coating crew, Banister has one crew member cleaning up right after they're done coating the pipe you can't even tell they were there. The coating that they apply is call epoxy, the epoxy is to protect the pipe from any corrosion; SF26 (836+100) Monitor Banister welding crew, who are moving along the ROW very well. The sites are very clean as they move forward; Work forecast: Go back tomorrow and monitor the lower end crew.

On October 3, safety theme identified as safety theme identified as trips, slips, falls, weather, congested sites; contact info for Medic-camp (1-780-329-9183); Temp 2, UV index 1, wind chill of minus 7 in the evening and minus 12 overnight; Follow all bio security; SF4 (KP813+200) Monitor Banister the production on the ROW is slow today because of bad weather; SF23 (KP830+900) Monitor Banister everything on the ROW is very slow today because of the weather and wet conditions; Work forecast: Go back and monitor the ROW tomorrow.

On October 4, safety theme identified as safety theme identified as trips, slips, falls, weather, congested sites; contact info for Medic-camp (1-780-329-9183); Temp 4, UV index 4; Follow all bio-security, all sites are nice and clean; SF26 (836+600) Wetland: MB1049 Seasonal Marsh (Class3); SF26(KP838+.03)Wetland:MB050 Semi Permanent Marsh (Class4) Wetland Complex; SF27 (KP838+71) Wetland:MB051 Ephemeral Temporary Marsh (Class1/Class2) These are the three sites where the welders are

working. The top soil that the dozers move is nicely put alongside the wetlands which it is in the stake boundaries; SF27 (838.83 +838.92) Wetland: MB052 this is a Seasonal Marsh (Class3); SF34 (KP858+000) This area is a Northern Leopard Frog Breeding Waterbody: MB085 there is a 400 meters buffer from the breeding pond. Banister is also installing geo- tech and building a ramp to cross the wetland and also doing some fencing; Work forecast: Go back and monitor the ROW tomorrow.

On October 5, congested sites, stop at all railway crossing, stay in contact with the senior monitor let him know where you're going to be for the day. Medic's-Camp number: 1-780-329-9183. Matrix 24 hour emergency number: 403-589-7222; Temp 2, UV index1 or lower. Follow All Bio Security. All sites are nice and clean as they move down the ROW; wetland MB: 081, the wetland is a broadleaf treed swamp wetland complex; SF37 (KP 861+695) Banister going to be setting up a wash station so they could fine clean the equipment. After the fine cleaning they are moving the equipment to (SF56), they are also taking down some fencing; SF33 (KP 854+800) wetland MB: 081 This wetland is a broadleaf treed swamp wetland complex. They are also building a ramp across the wetland. The have installed the geo-tech and are hauling sand to get the ramp done so they can cross the wetland. There is 2 marucas and 1 rock truck hauling sand on the wetland. The sand is being hauled from the eastside of the road and the wetland is on the Westside of the road; Work forecast: Go back and monitor the ROW tomorrow.

On October 6, 2018, congested sites, stop at all railway crossing, stay in contact with the senior monitor let him know where you're going to be for the day. Medic's-Camp number: 1-780-329-9183. Matrix 24 hour emergency number: 403-589-7222; Follow all Bio Security, Temp 2. Have your vehicle fine cleaned and bleach the tires before entering a restricted area; SF46 (877+000) Progress is really slow down the ROW today due to poor weather; SF47(878+800) Banister has started to do some stripping down on the ROW but had to stop because of wet conditions; Work forecast: Go back and monitor the ROW tomorrow.

Photos of Sites Visited & Topics Discussed This Week

October 1, 2018



SF 38 (KP 863+392)

This is where the Heritage Sensitive Area is located. Archaeologist is waiting for the equipment to get to site. Photo taken facing west



SF38(863+392)

This is where the Native Prairie begins. Photo taken facing east.

October 2, 2018



SF4(KP813+200)

This where Banister got to pump out the water so they could start installing the pipe. Photo taken facing east



SF6 (KP816+800)

90 degree pipe, which will be attached to the bore pipe that goes under the roadway.
Photo taken facing south.



SF4 (KP813+200)

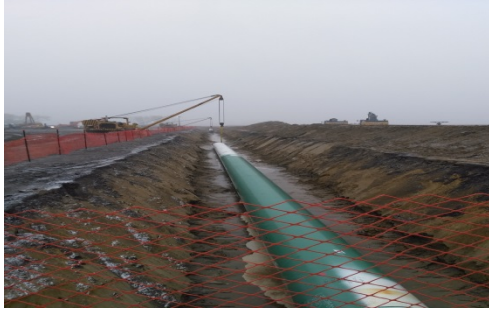
This is what they call a jeep it detects any defects with the pipe. Photo taken facing north.



SF11(KP819+000)

Rolling on the epoxy on the weld to protect it from corrosion. This is the crew member that cleaning up after. Photo taken facing south.

October 3, 2018



SF4 (KP 813+200)

Banister waiting for the weather to cooperate so they could back fill the trench
Photo taken facing west



SF23 (830+900)

Bad weather slow things down snow and rain. Photo taken facing east

October 4, 2018



SF27 (KP838+.83 to838.92)

Wetland: MB052, seasonal marsh (class 3)
photo taken facing east



SF26(836+600)

wetland: MB1049, wetland seasonal marsh (class 3) this is right where the welder's are. photo taken facing south



SF26 (836+600)

wetland MB 1049 seasonal marsh (class 3) this is where the welder's are working by the three wetlands. photo taken facing west



SF26(836+600)

wetland: MB1049 wetland seasonal marsh (class 3) this is right where the welder's are. photo taken facing south



SF34(KP 858+000)

MB-085 Northern Leopard Frog Breeding Waterbody. There is a 400 meters buffer from the breeding pond. Photo taken facing West.

October 5, 2018



SF37 (KP 861+695)

Setting up wash equipment.



SF33 (KP 854+800)

WETLAND MB:081 (Class3), Maruca waiting to unload sand so they could cross the wetland. Photo taken facing west



SF33 (KP 854+800)

wetland mb:081 (class 3) broadleaf treed swamp wetland complex. Photo taken facing west.



SF33 (KP 854+800)

Wetland MB:081 (Class3) broadleaf treed swamp wetland complex. Rock truck waiting to dump the sand on to the ramp. Photo taken west.

October 6, 2018



SF46(KP877+000)

Banister have started to strip the topsoil but had to stop because of the weather. Photo taken facing east



SF47 (KP878+800)

Banister had to stop stripping due to poor weather conditions, photo taken facing east

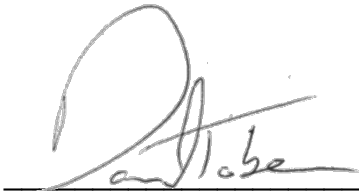
APPROVALS



Arnold Breland
Construction Monitor

October 26, 2018

Date



Daniel Tober
Senior Environmental Scientist

October 26, 2018

Date